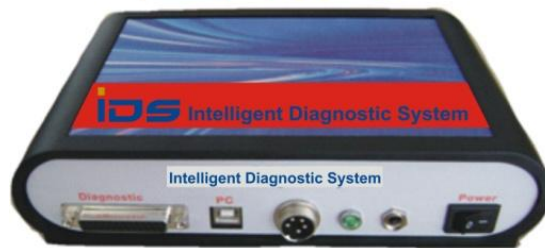




## Installation Guide



**1** Device  
for **4**



## Installation Guide

**Congratulation to your new iDS diagnostic tool.**

**Before you start the software installation please check that your “WINDOWS” system is installed on your computer/laptop/netbook on “local drive C:”**

**Please make sure, your hardware is connected as shown below:**



**Before installing your new software, you need to connect the iDS to your computer**

**Plug the USB cable into your computer**

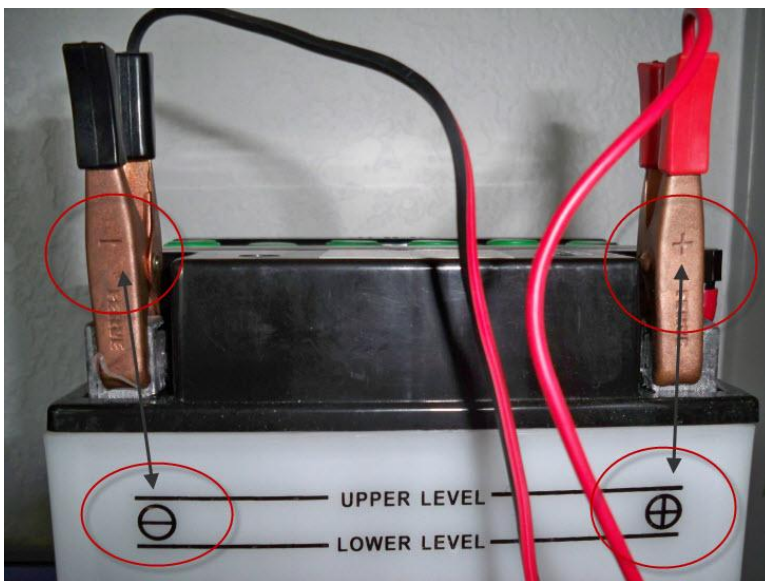


**Plug in the other end of the USB cable into the iDS USB jack**

## Installation Guide



Plug in the power cable to the iDS power jack



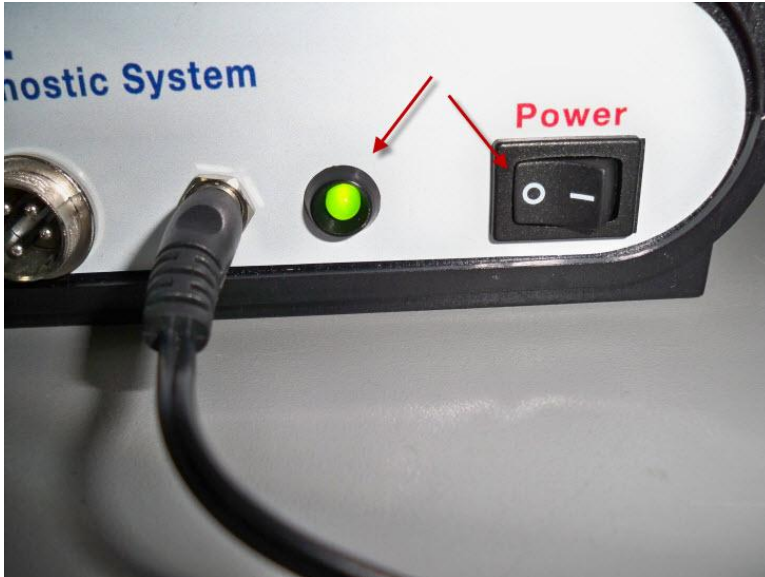
Attach the power cable clamps to a battery.

Attention:  
please make shure to attach

+ (RED) to the + terminal

- (Black) to the - terminal

## Installation Guide



**Turn on power switch**

**Green light is on**

## Installation Guide

Please follow the steps in this manual to install your Scan World System software application.



You can use the original software CD for your installation.

*The installation will start automatically within a few seconds after you insert the CD into your CD-drive.*

**Go to page 7**



If you're going to install the software on a device that does not have a cd-drive, you can copy the software from the original CD to a memory stick.

In this case the installation has be started manually.

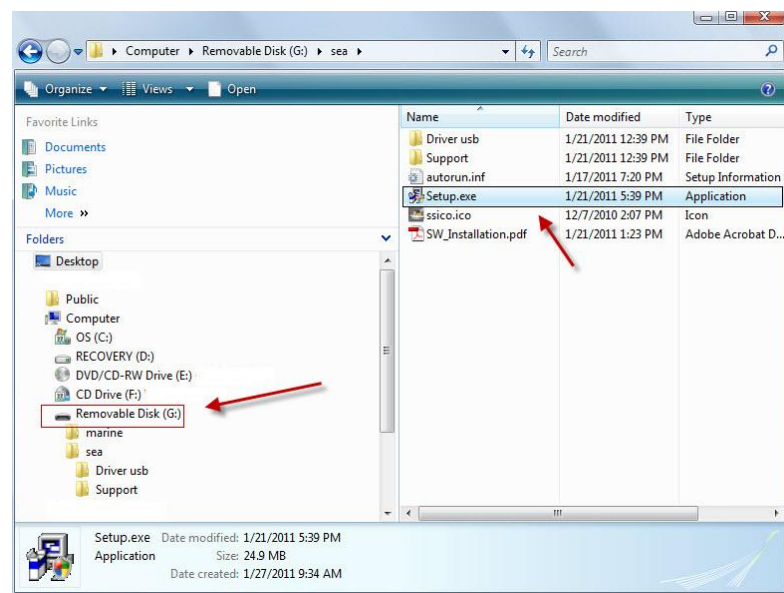


## Installation Guide



**Manual installation from memory stick**

**Go to “My Computer” (Windows XP) or “Computer” (Windows Vista/7).**

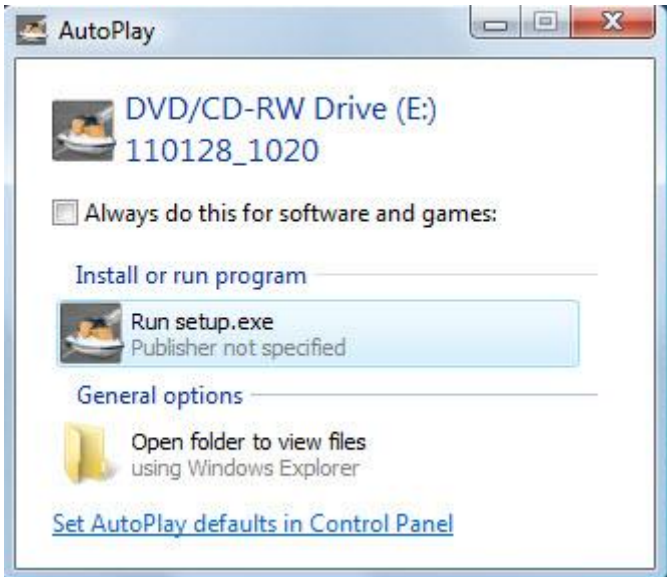


**Choose either the Memory stick or the CD-drive**

**Double click setup to start installation**

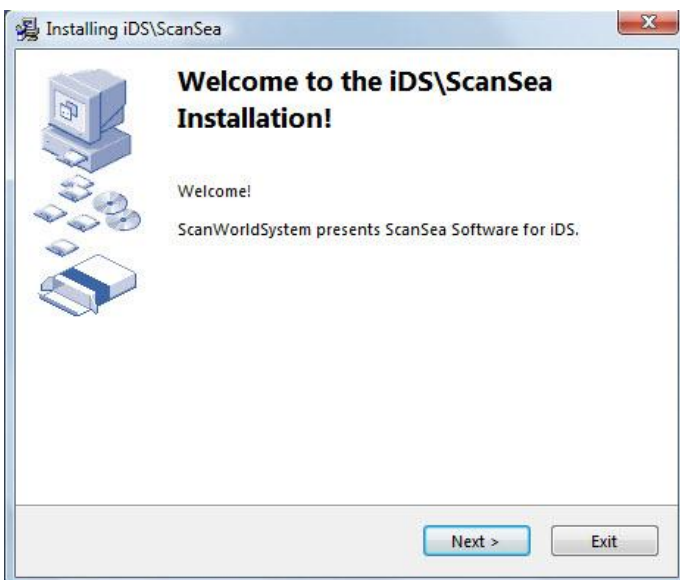


## Installation Guide



**Automatic installation**

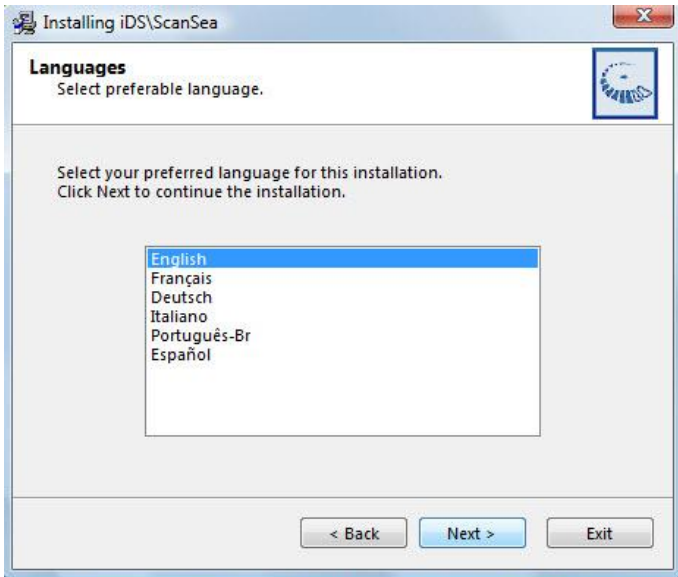
**Click “Run Setup”**



**Click “Next”**



## Installation Guide

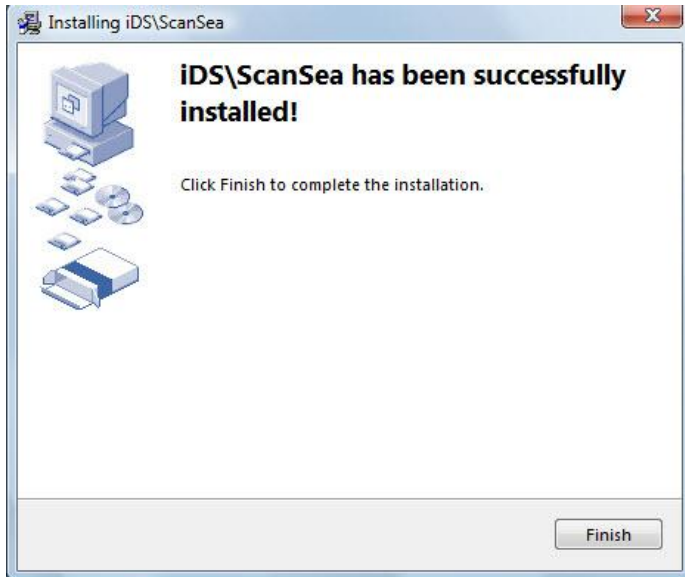


**Choose preferred Language**  
**Click “Next”**



**Use default destination folder (recommended) or choose your own**  
**Click “Next”**

## Installation Guide



**Setup will install the program and necessary driver automatically**

**Click “Finish”**

**After the installation is finished, the program asks you to restart your computer**



**One of these Icons will be placed on your desktop.**





## Installation Guide

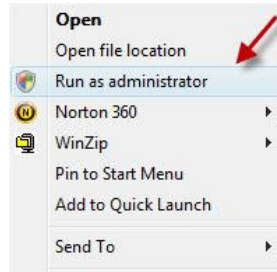
Now you're ready to start the software



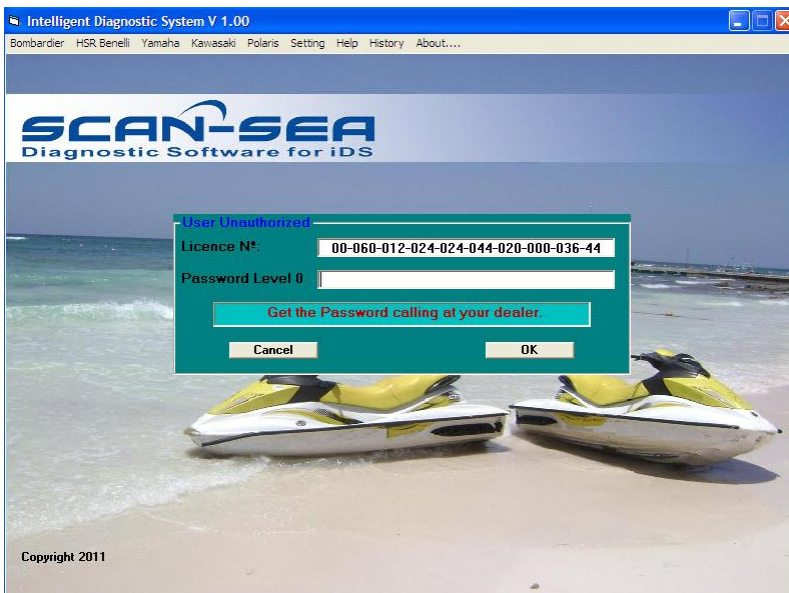
**USER** double click the ICON to start



**User**



click right mouse button and run as "Administrator"



When starting the program for the very first time, the software is generating a **License No.**

We'll need this **License No.** in order to create your personal **Password.**

**NOTE!** *The passwords for each software application need to be requested separately! After the first password is typed in the next software can be started to generate the License No.*



## Installation Guide

### IMPORTANT!

**Please do not shut down your computer before you received your password and typed it in! Computer and program re-start would create another NEW License No and the password will not work!**



**Type in your Password and you're ready to use your new diagnostic system!**



*Please do not forget to register your new iDS system and software.*

*You'll receive your personal user name and password by e-mail to become eligible to download FREE software updates.*